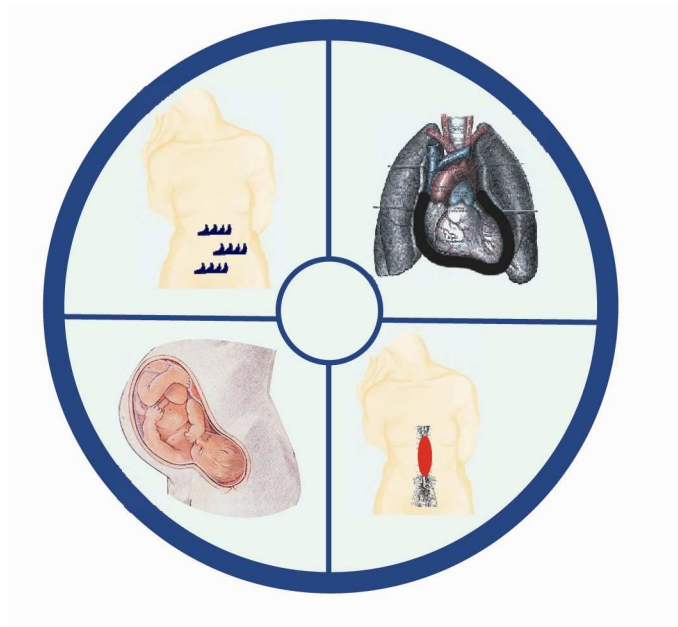


Welcome to

EDE

Emergency
Department Echo



The Essentials of
Emergency Department Ultrasound

Dear Colleague,

Thank you very much for your interest in the *Emergency Department Echo (EDE)* course. Over 2000 Canadian Physicians have already taken this course, which is rated for 10 MainPro-C credits by the CCFP and 10 Section 1 credits by the RCPSC.

At the beginning of the last decade, the introduction of RSI signaled a dramatic change in the way EM was practiced. In this decade, we believe that the use of ultrasound by emergency physicians will have the same impact. This course was created because it has become clear that Canadian EP's must become proficient in the use of this technique. To achieve this, a somewhat different approach is proposed:

1) You learn most of the didactic material *beforehand*, through the use of a text which is strictly focused on what you *need to know* to use EDE for the five key EM indications: unexplained hypotension, pericardial tamponade, intra-abdominal hemorrhage, AAA and ectopic pregnancy. This text is the only work available in the ED ultrasound field which has been written with this exclusive goal in mind. This leaves most of the day of the course available for *hands-on practice*.

2) You don't come to the course; *the course comes to you*.

Bottom line: in one (long) day, in your home town, you will achieve the same degree of proficiency (or more) that you would by going to a far more expensive course halfway across the continent. More importantly, you achieve this level of comfort *as a group*. If emergency physicians obtain training together, there is a far greater chance that they will be able to surmount the administrative, financial and political obstacles that lie before them as they seek to integrate ED ultrasound into their practice.

This will not occur without some organizational effort on your part. We bring you the director, assistant director, the cameras and the script, but you have to supply the set, the props, and the rest of the cast and crew. It is far preferable to have *one person* (preferably an EP) in charge of all organizational aspects. Setting up the course is not difficult, but it does involve a *large* number of phone calls. While many of these can be done by a secretary, it is essential that a physician (one with sound organizational skills) be in charge of the process. We recommend that you assign one member of your group to this task, using whatever means of coercion or remuneration seem most appropriate.

Though somewhat daunting, this task is facilitated by the “Course Preparation Package” of the EDE Course. Having been given over 150 times, this package anticipates nearly all the questions a local organizer may have. Included in this package are:

- 1) The first two pages of the text, which include the course philosophy as well as the introduction to EDE ("Course Philosophy").
- 2) Detailed instructions on how to prepare your center to host the course ("EDE Course Prep") and a diagram of the suggested layout of the room where the course will be taught ("EDE Layout").
- 3) A course outline ("EDE outline"), complete with timings.
- 4) A “Local Organiser Checklist”, which summarizes the tasks to be accomplished
- 5) “Local Organizer Course Day Notes”, which explain in even greater detail how to run things on course day.
- 6) Instructions for models ("EDE Models") which INCLUDE the times those models should be present, and a spreadsheet on which to track your volunteers and models
- 7) A copy of the certificate.

Should you decide to proceed with the course, experience suggests that you should allow yourself 2-3 months to organize everything, rather less if you are in a larger center.

The course text will be sent to you 4 weeks before your chosen date and is provided *free of charge*. A pre-test is emailed one week prior to the course to encourage participants to be well-prepared.

To ensure that the learning experience is of the highest possible quality, each day is limited to 8-12 participants.

Cost of the course is detailed in an attached file (“Course Prep”) and is mainly comprised of instructor fees and travel expenses. Please note that all the physicians on the teaching staff are passionate about teaching EDE. We travel economy, pay for our own meals and are happy to sleep on a colleague's couch.

Regards,

Ray Wiss, M.D., HBPHE, CCFP (EM), CSPQ (EM)
Course Director

55 Windsor Crescent
Sudbury, Ontario
P3E 1Z6
705-522-0622

portray@vianet.ca